

# Community Engagement Alliance (CEAL)

*Against COVID-19 Disparities*

## Consultative Resource (CEACR)

Mylynda B. Massart, MD, PhD

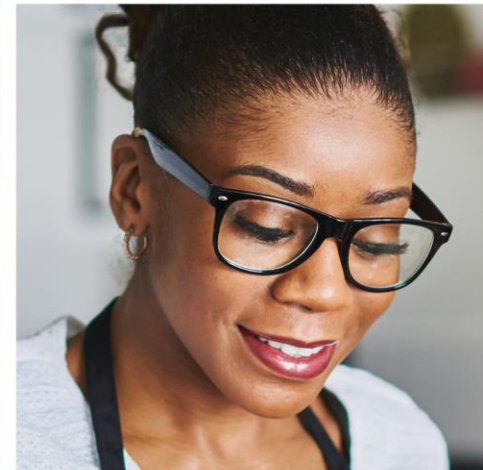
Department of Family Medicine

Clinical and Translational Science Institute

Institute for Precision Medicine

University of Pittsburgh

**NIH CEAL**  
Community Engagement Alliance



# Background



## Research Opportunity Announcement

OTA-21-016

Community Engagement Research Alliance (CEAL)  
Against COVID-19 Disparities: Consultative Resource

- The CEAL Consultative Resource (CEACR) project was submitted in response to OTA-21-016 Community Engagement Research Alliance (CEAL) Against COVID-19 Disparities: Consultative Resource
- The CEAL Consultative Resource was established to elevate best practices throughout CEAL and provide customized expertise to optimize inclusive participation across the research ecosystem.
- ROA Application Deadline was 05-03-2021

# Community Engagement Consultative Resource

## Core Services

*Best Practices and Innovations in Inclusive Participation in Research*

### Core Services



Convene tailored **Expert Panels** from the CEAL Alliance (CEAL team, community partners, other experts including CCPH) to promote **Inclusive Participation** and strategies to integrate diverse populations in research opportunities



Feature CEAL Alliance assets through **tools, training materials, + resources** relevant to the consult



Integrate **principles** of trustworthiness and research reciprocity through expert guidance on equitable practices in research

# Community Engagement Consultative Resource

## *Potential Consult Topics*

### Consult Topics/Services

Development of  
community-  
competent outreach  
strategies and  
interventions

Employing principles  
of trust and  
reciprocity in  
institutional/clinical  
spaces

Enhancing the  
academic/community  
relationship

Humanizing the  
research process

Community-engaged  
research study  
design

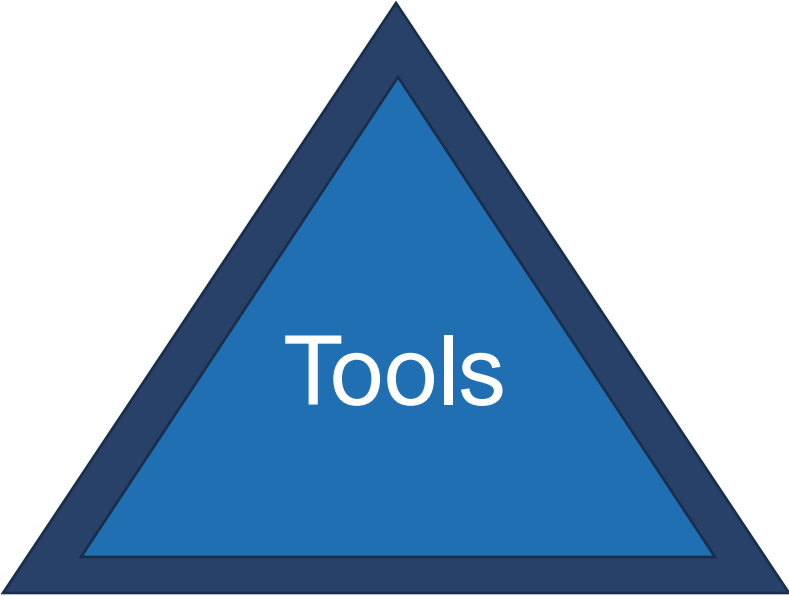
Balancing research  
VS  
community needs  
and interests

Addressing vaccine  
hesitancy in  
minoritized  
communities

Building an inclusive  
research workforce

Understanding  
barriers to inclusive  
participation in  
research

# CEACR Tools: CEAL Asset Map



### Teams

Your teams

- NC** NHLBI CEAL Steering Committee (CS...
  - General
  - Communication Work Group
  - CSC Co-Chairs and WG Co-Chairs
  - Inclusive Participation Work Group**
  - Needs Assessment and Evaluation Wor...
- NC** NIH CEAL Interest Groups (O365)
  - General
  - Asian American, Native Hawaiian, Pacifi...
  - CEAL American Indian Alaska Native Int...

# Dashboard 6.1

## CEACR Consults - Cumulative from Dec 2021 to Jun 2023

Completed Consults  
**38**

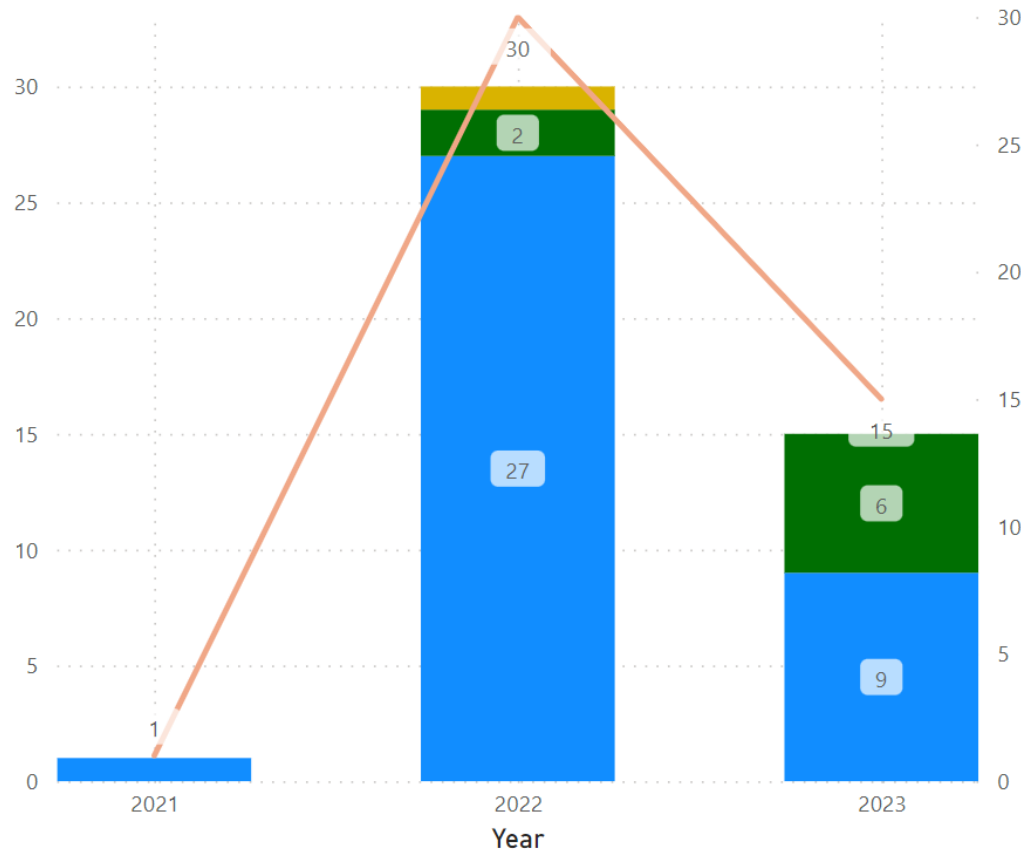
In progress Consults  
**4**

Upcoming Consults  
**4**

Total Consults  
**46**

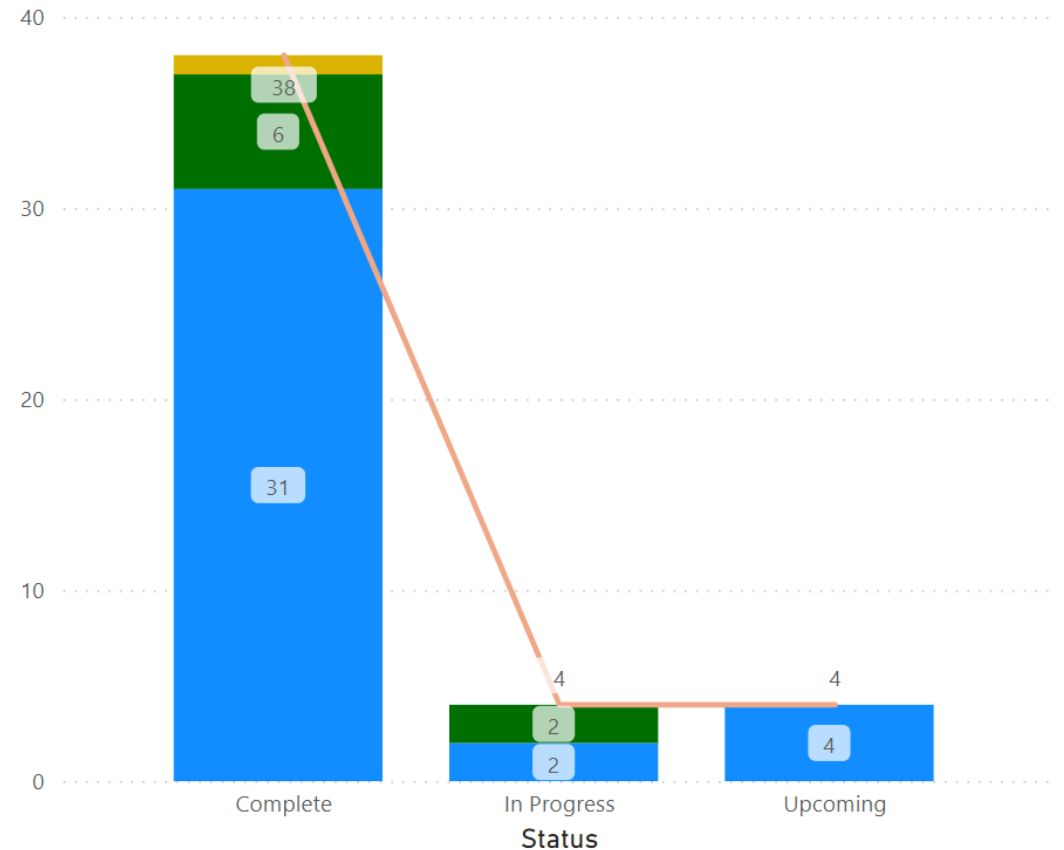
### Chart 1: Consults by Year (Total)

Priority ● 1 ● 2 ● 4 ● Count of Consultee



### Chart 2: Consults Status Breakdown (Total)

Priority ● 1 ● 2 ● 4 ● Count of Consultee



# Dashboard 6.2

## CEACR Consults - Cumulative from Dec 2021 to Jun 2023

Total Expert Panels  
**18**

Total Expert Panelists  
**70**

Total Consultees  
**46**

Consultees Bucket  
**6**

Chart 3: Panelist Affiliation Distribution

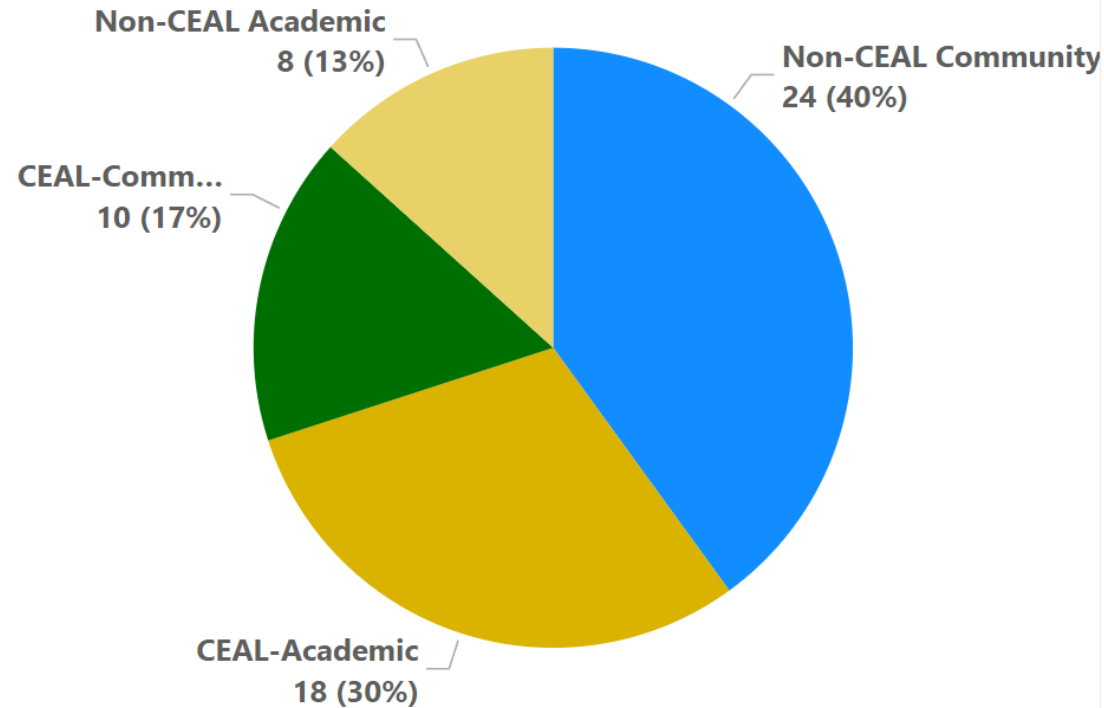
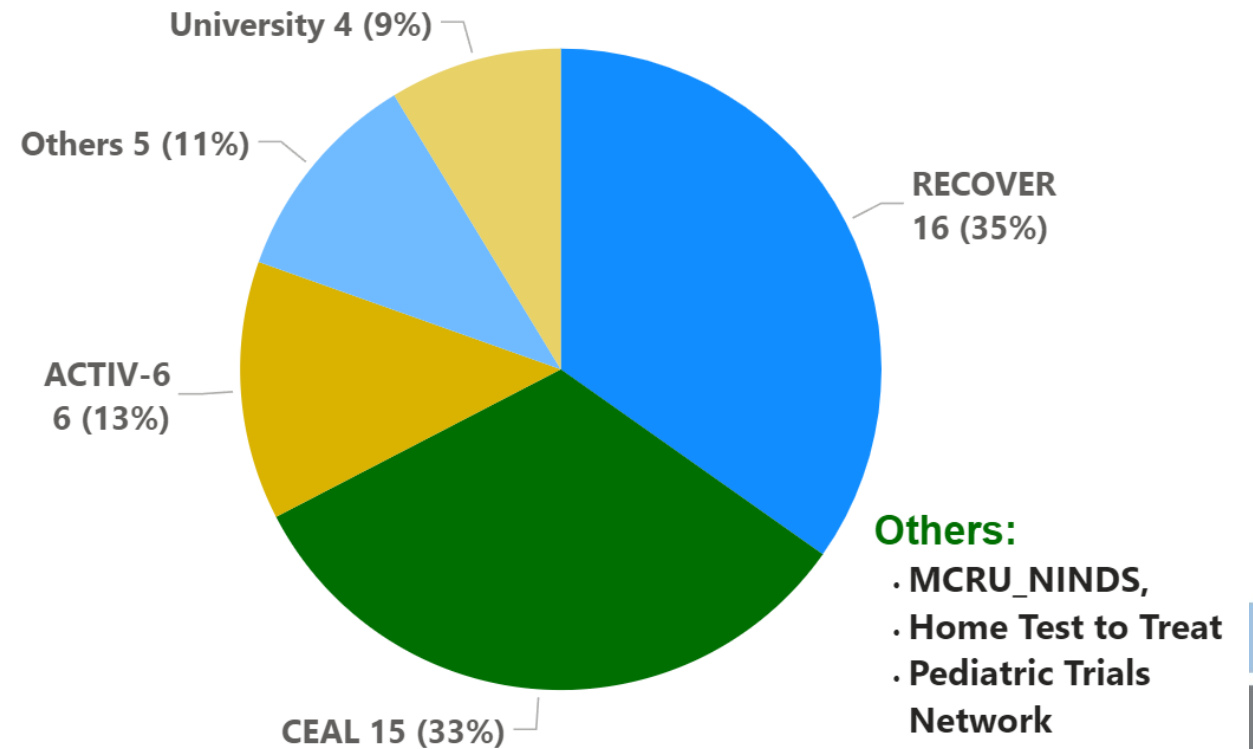


Chart 4: Consultees Distribution by Sites (Overall)





# CEACR Success Stories



BUILDING RELATIONSHIPS  
W/ COMMUNITY PARTNERS



**User:** Texas CEAL  
Research Team



**Focus:** Alternative  
approaches to CBO  
partner payment



**Impact:**

- Immediately implemented recs → **institutional change**
- Drafting **publications**

## *Escrow Fund*

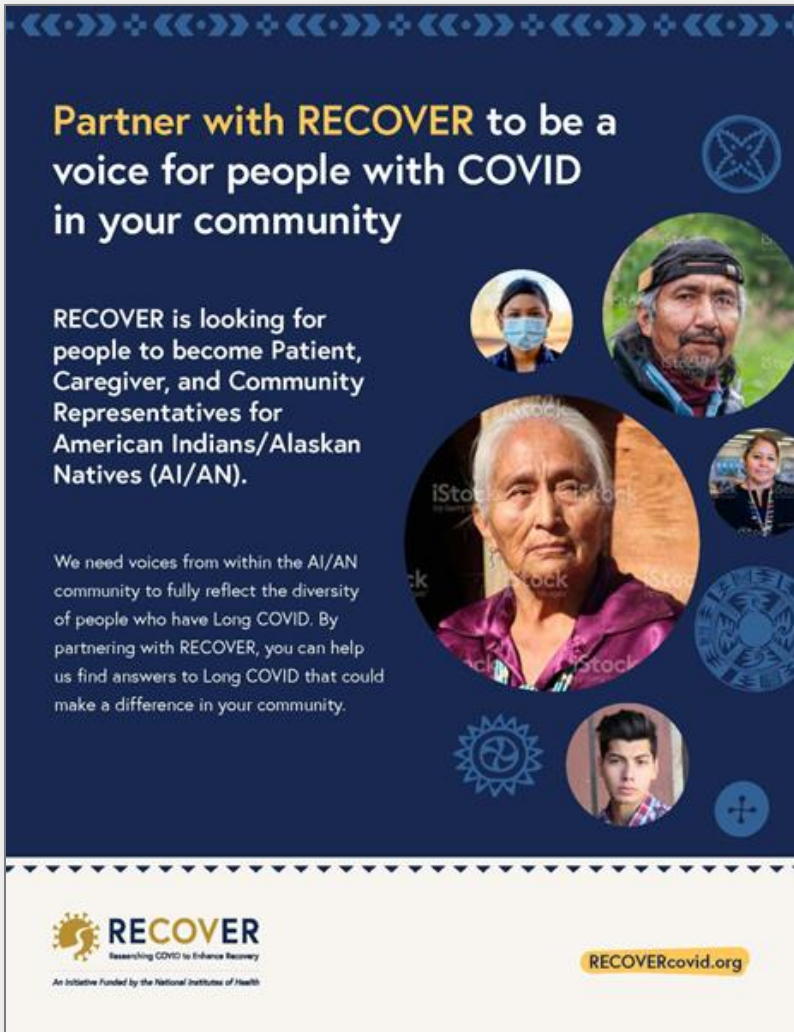
- Escrow fund (<\$5,000)
- “A legal concept describing a financial agreement whereby an asset or money is held by a third party on behalf of two other partners that are in the process of completing a transaction”
- [All About Escrow-Funds Administration](#)
- [How Escrow Protects Parties in Financial Transactions](#)

## *Ombuds (-man, -person)*

- Neutral, trusted navigators
- Institution | Ombudsman | Community
- Alleviate the administrative burden for both parties
- [Who Are Ombuds?](#)
- [Associate Ombudsperson - Job Descriptions - Human Resources: The University of New Mexico \(unm.edu\)](#)



# CEACR Success Stories



**Partner with RECOVER to be a voice for people with COVID in your community**

RECOVER is looking for people to become Patient, Caregiver, and Community Representatives for American Indians/Alaskan Natives (AI/AN).

We need voices from within the AI/AN community to fully reflect the diversity of people who have Long COVID. By partnering with RECOVER, you can help us find answers to Long COVID that could make a difference in your community.

**RECOVER**  
Researching COVID to Enhance Recovery  
An Initiative Funded by the National Institutes of Health

[RECOVERcovid.org](https://RECOVERcovid.org)



**What is RECOVER?**

RECOVER is a research project that aims to learn about the long-term health effects of COVID, called **Long COVID**. RECOVER's goal is to better understand, prevent, and treat Long COVID. It is a nationwide project funded by the National Institutes of Health (NIH).

**Who can be a RECOVER Patient, Caregiver, and Community Representative?**

Representatives are people who:

- Have Long COVID
- Have a family member or close friend with Long COVID
- Live or work in communities that have higher numbers of COVID or COVID-related problems, such as AI/AN communities
- Are respectful, kind to others, and open to sharing their experience

**What will Representatives do?**

Representatives will listen, talk, and share their thoughts with RECOVER researchers. For example, Representatives will:

- Attend and listen to meetings with RECOVER groups
- Review and give feedback to improve RECOVER studies
- Share their knowledge and personal experience with COVID and Long COVID
- Be paid for their time

## MATERIAL AND ASSET REVIEW



User: RECOVER



Focus: Cultural appropriateness of outreach materials (Spanish, 65+, AI/AN)



Recommendations

- Easy-to-Understand
- Reading Level
- Clarify Nature of Trial



Impact:

- Adjusted materials
- Requested consults for other demographics

# Keep CEACR in Mind for Consults

## Access the Webpage

SEARCH BY WEB BROWSER



ENTER THE URL

 <https://covid19community.nih.gov/about-CEACR>



The screenshot shows the NIH CEACR website homepage. At the top, there is the NIH logo and the text 'National Institutes of Health Community Engagement Alliance'. Below this is a navigation bar with links for 'Resources to Share', 'Community Engagement', 'Events', 'News', and 'About CEAL'. The main heading reads 'The Community Engagement Alliance (CEAL) Against COVID-19 Disparities: Consultative Resource'. Below the heading is a paragraph describing CEACR's mission and a list of goals. A photograph of a diverse group of people is also visible.

**The Community Engagement Alliance (CEAL) Against COVID-19 Disparities: Consultative Resource**

The Community Engagement Alliance (CEAL) Against COVID-19 Disparities: **Consultative Resource** (CEACR) was established to elevate best practices throughout CEAL and provide customized expertise to optimize inclusive participation across the research ecosystem. CEACR will serve as a conduit for community-engaged best practices by disseminating national CEAL resources to NIH-funded COVID-19 research teams seeking guidance. Consultees can include CEAL sites, community-based organizations, and other NIH-funded teams working towards health equity.

**CEACR Goals**

- Provide flexible, tailored **consultations** to a variety of end-users through its collaboration with Community-Campus Partnerships for Health (CCPH)
- Establish sustainable community-academic **collaborations** that address the disproportionate impact of the pandemic on minority and underserved communities
- Assist research institutions in increasing the **trustworthiness** of science and health care among underserved communities

## Attend the Speaker Series

### CEACR Speaker Series: Summer 2022

#### Humanizing the Study Participant Journey- Strengthening Inclusive Participation

- Description: Guest speakers discuss the barriers and facilitators toward inclusive participation in research. This session highlights ways research teams can engage participants that meet enrollment needs while prioritizing the participant experience.
- Time: July 29, 2022 01:00 PM Eastern Time (US and Canada)
- [Register for the July 29 event.](#)



Find out more about monthly learning sessions on various topics related to community engagement hosted by the CEACR Team.

## Request a Consult

### CEACR Consult Topics/Services

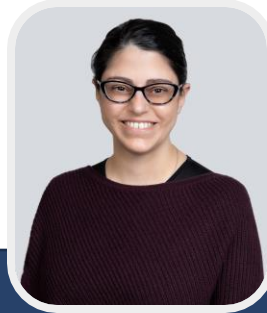
- Developing community-competent outreach strategies and interventions
- Employing principles of trust and reciprocity in institutional/clinical spaces
- Enhancing the academic/community relationship
- Humanizing the research process
- Designing community-engaged research studies
- Balancing research versus community needs and interests
- Addressing vaccine hesitancy in minority communities
- Building an inclusive research workforce
- Understanding barriers to inclusive participation in research

Requests for CEACR services can be made using the [CEACR Consult Request Form.](#)



Requests for CEACR services can be made using the [CEACR Consult Request Form.](#)

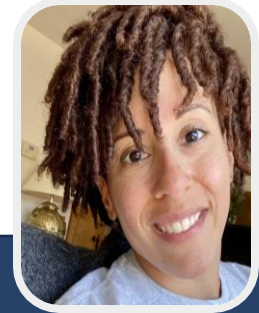
# *Thank You* from the CEACR team!



Mylynda Massart  
PI



Elizabeth Miller  
Co-PI



Nadia Jones  
Sr. Project Coordinator

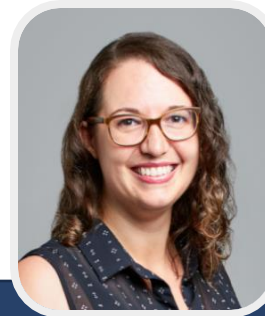


**Community-Campus  
Partnerships for Health**

Promoting Health Equity and Social Justice



Al Richmond  
Executive Director, CCPH



Emily Finley  
Program Coordinator, CCPH



Paige Castro-Reyes  
Deputy Director, CCPH

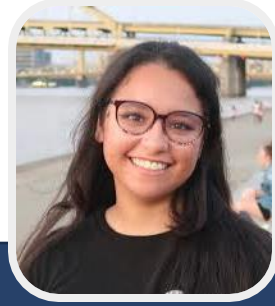




Jake Romanowski  
Project Manager



Nicole McCambridge  
Research Assistant



Brianna Frye  
Research Assistant



Fuzexia Guo  
Evaluation



Mary Goldberg  
Evaluation



Maliha Ilias  
NHLBI  
Program Lead



Chanza Baytop  
WESTAT/CETAC



Joy Goens Thomas  
WESTAT/CETAC