



- Before any radiation procedure, talk with your healthcare provider, MotherToBaby, or the Health Physics Society about breastfeeding recommendations.
- Consider pumping and storing milk if your procedure might require you to wait before breastfeeding again.

Your Guide to Radiation Sources during Breastfeeding

BY MOTHERTOBABY AND
HEALTH PHYSICS SOCIETY

Need more information?



MotherToBaby

For personalized information
about radiation and other
exposures in pregnancy and
breastfeeding



momtobaby.org/radiation



Health Physics Society

"Ask the Experts" for helpful
answers to questions about
various radiation exposures

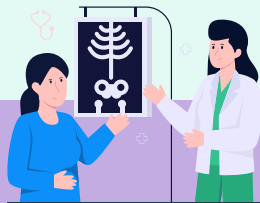


momtobaby.org/hps



Airport Security Screening

Airport security screening equipment uses either non-ionizing radiation or very low levels of ionizing radiation. Passing through or near this equipment does not harm breast milk (whether pumped or still in the breast).



X-Rays

X-rays, CT scans, mammograms, and fluoroscopy procedures do not leave radiation in the body or breast milk. Breastfeeding can resume right after these procedures.



Contrast Agents

Most contrast agents enter the breast milk in small amounts and are not expected to cause side effects in breastfed babies.



External Beam Radiation

External beam radiation does not leave radiation in breast milk. Breastfeeding can resume right after the procedure.



Nuclear Medicine

Nuclear medicine imaging uses radioactive material and might require a wait time before breastfeeding. Nuclear medicine therapy might require breastfeeding to stop completely.



Radiation Therapy

Each radionuclide impacts breast milk differently. Talk to your healthcare provider about your specific treatment and when breastfeeding could resume.